

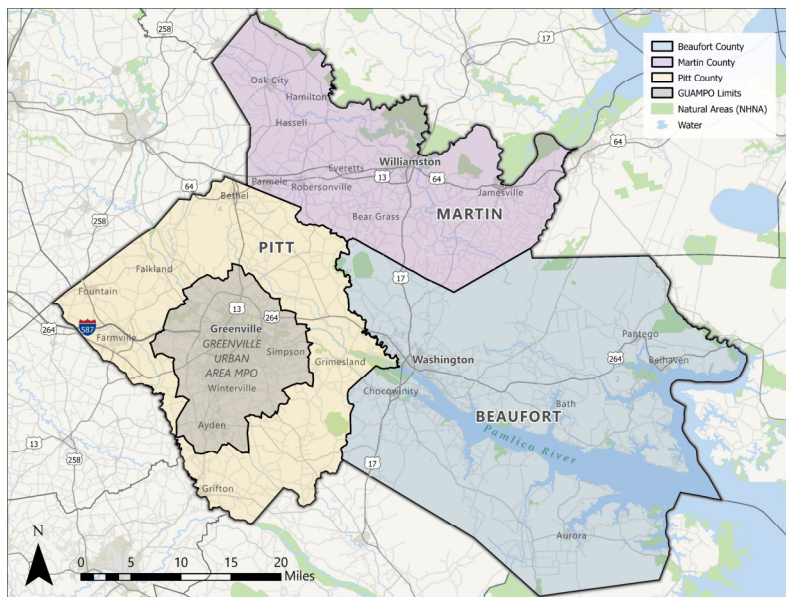
COMPREHENSIVE SAFETY ACTION PLAN



We're developing a plan to reduce roadway crashes and improve transportation in Beaufort County, Martin County, and Pitt County!

ABOUT THE PLAN

At the Mid-East Rural Planning Organization (MERPO), we are committed to making our transportation system safer for everyone who lives in, works in, or visits our region. MERPO is developing a Comprehensive Safety Action Plan in partnership with NCDOT's Traffic Safety Unit to reduce crashes and improving transportation in Beaufort County, Martin County, and Pitt County. Guided by USDOT's Safe Systems Approach (Safer Roads, Safer Speeds, Safer Road Users, Safer Vehicles, and Post-Crash Care), the Comprehensive Safety Action Plan will be guided by data-driven analysis and meaningful input from the communities we serve.



STUDY AREA

VISIT OUR WEBSITE

Learn more about the plan, leave your input, and view plan materials!



<https://www.mideastrpo.com/transportation-safety-plan>



CRASH FACTS

The number of crashes in the study area has remained relatively steady over the years. Between January 1, 2020, and December 31, 2024, there were **14,685 total reported crashes**. Of these, **402 resulted in fatalities or serious injuries**, underscoring the persistent safety challenges faced by the region. Fatal and severe crashes have been reported across Martin, Pitt, and Beaufort Counties.

CRASH QUICK FACTS



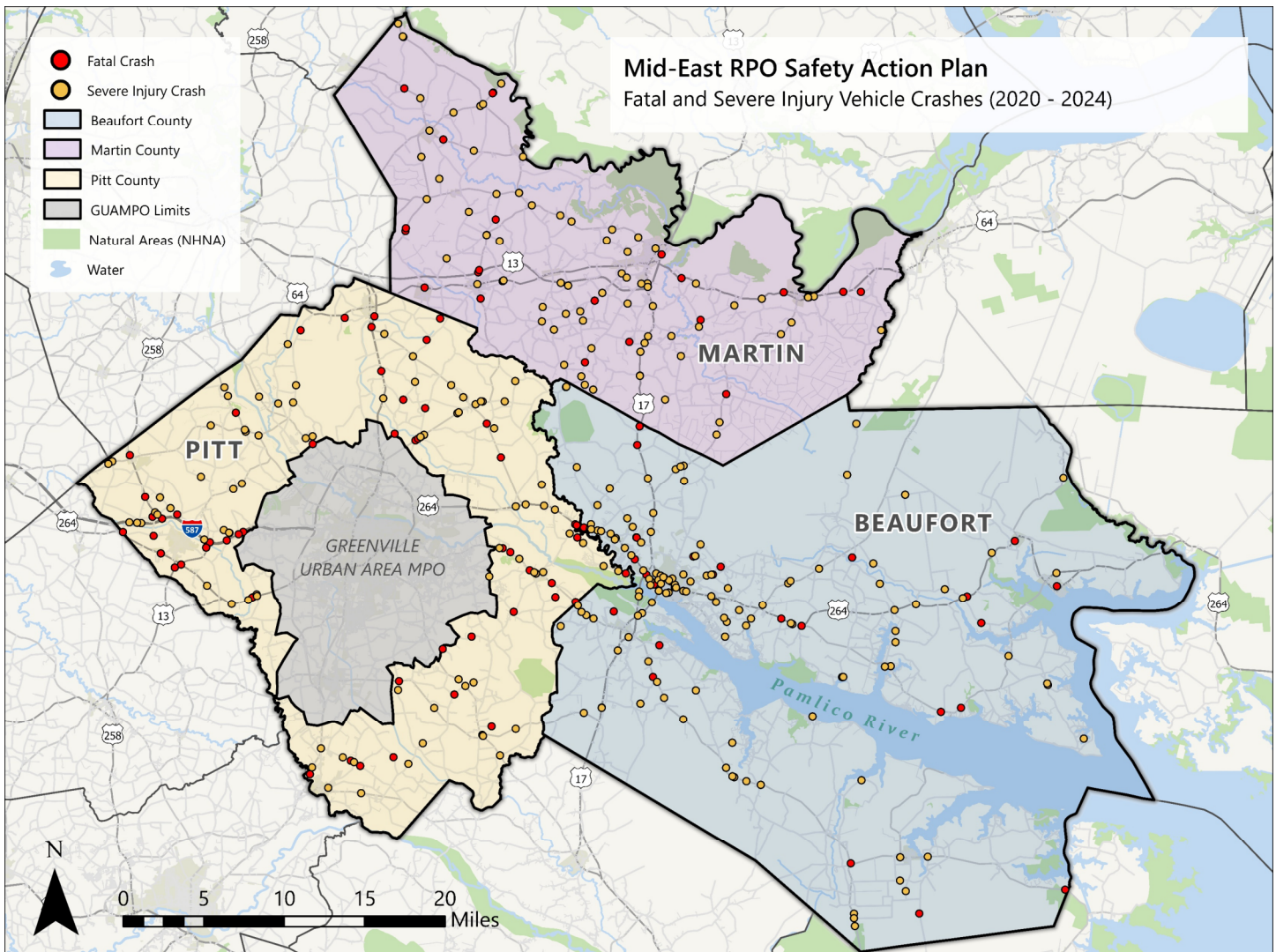
1 IN 144 VEHICLE CRASHES RESULTED IN A DEATH



1 IN 6 PEDESTRIAN CRASHES RESULTED IN A DEATH



1 IN 62 BICYCLIST CRASHES RESULTED IN A DEATH



FATAL AND SERIOUS INJURY CRASHES